

## TECHNICAL SPECIFICATIONS | 407 GOLD SFC 2955 WB, 4.45 Ton

TYPE	Truck Chassis with Cab & Load Body
<b>POWERTRAIN</b>	
Engine Type	4SPCR BS6
Displacement/Cubic Capacity	2956cc
Max. Power Output (in kW)	73.5 kW (100PS) @2800 r/min
Max. Torque	300 Nm @ 1200 -2200 r/min
Bore x Stroke	97 mm x 100 mm
Clutch	Single plate dry friction type- 280 mm dia
Transmission	G400, 5 Speed, Manual Synchronesh Gearbox (5F, 1R), PTOP
<b>FUEL SYSTEM</b>	
Fuel Injection System	M/s Delphi (suitable upto 2000 bar)
Fuel Tank Capacity	60 Liter
<b>ELECTRICALS</b>	
Battery	12V, 75 ah capacity
Alternator	120 amps
<b>PERFORMANCE</b>	
Max. Gradeability (1st Gear)	40 %+
<b>STEERING</b>	
Steering System	Power Steering
<b>FRAME</b>	
Frame	Ladder type frame with riveted/bolted cross members (5 no)
Long member size	180 x 55 x 5
<b>BRAKES</b>	
Service Brake	Vacuum assisted; Hydraulic two leading slide shoe; Auto Slack Adjuster
Parking Brake	Transmission mounted parking drum brake
<b>SUSPENSION &amp; TYRES</b>	
Front Suspension	Parabolic spring with rubber bush, 2 no Hydraulic Double acting Shock Absorbers
Rear Suspension	Semi elliptical leaf spring, 2 no Hydraulic Double acting Shock Absorbers
No. of tyres	Front 2,Rear 2 , Spare 1
Front	7.00 R 16LT, 12PR
Rear	7.00 R 16LT, 12PR

WEIGHT	CAB	CLB	HD
Front Axle Weight -FAW (in kg)	1480	1490	1500
Rear Axle Weight -RAW (in kg)	800	995	1050
Kerb Weight (in kg)	2280	2485	2600
Gross vehicle weight (in kg)	4450	4450	4450
<b>OVERALL DIMENSIONS</b>			
Wheel base (in mm)	2955	2955	2955
Overall Length (in mm)	4687	4850	4850
Overall Height (in mm)	2260	2260	2270
Overall Width (in mm)	1905	2100	2100
<b>LOAD BODY DIMENSIONS</b>			
Load body Length (in mm)	NA	2532	2532
Load body Width (in mm)	NA	2000	1965
Load body Height (in mm)	NA	325	1835
Minimum Turning Dia (in metres)	11.9		
Minimum Ground Clearance (in mm)	209	209	209
Seating Capacity	Driver + 2	Driver + 2	Driver + 2
Warranty	3 years or 300000 km, Whichever is earlier*		

For details, please refer to operator's service book

**TATA MOTORS**  
**SAMARTH**

Dealer Stamp

3-YEAR/3-LAKH KM WARRANTY

TATA NEW GENERATION TELEMATICS

TATA DELIGHT

TATA ZIPPY

TATA OK

**TATA MOTORS SAMPOORNA SEVA**

AAPKE SAATH HAR KADAM

TATA GENUINE PARTS

TATA SURAKSHA

TATA PROLIFE

TATA KAVACH

TATA ALERT

TOLL-FREE 1800 209 7979

## TATA MOTORS

For more information, please visit our website: [www.light-trucks.tatamotors.com](http://www.light-trucks.tatamotors.com)  
You can also contact our Sales Office: Tata Motors Limited, 4th Floor, Ahura Centre, 82, Mahakali Caves Road, MIDC, Andheri (East), Mumbai - 400 093 or call toll-free no. 1800 209 7979.

Terms & Conditions apply as per the policy of ITGI. Insurance available on light, intermediate & heavy commercial vehicles.  
CAUTION: Accessories shown in the picture or elsewhere do not constitute standard fitment. The specifications are merely indicative. Due to continuous product improvements, these specifications are liable to change without notice.

**TATA MOTORS**  
Connecting Aspirations



# Presenting The Gold Standard of LCV Pick up in BS6

## TATA 407 GOLD SFC



H2LS  
BRAKES



DRIVER'S  
SAFETY



POWER  
STEERING



FUEL-EFFICIENT  
ENGINE



3-YEAR/3 LAKH KM\*  
WARRANTY



IN-BUILT  
MUSIC SYSTEM



MOBILE  
CHARGING SOCKET



HEAT-RESISTANT  
FEATURES

## TATA MOTORS NEW BS6 ILCV RANGE

EXPERIENCE THE



EXPERIENCE THE  
POWER OF CHANGE

**BS6** THE POWER OF 6



POWER OF  
GREATER PROFITS



POWER OF GREATER  
CONVENIENCE &  
CONNECTIVITY



POWER OF ENHANCED  
PERFORMANCE



POWER OF  
GREATER VALUE



POWER OF INCREASED  
DRIVING COMFORT



POWER OF IMPROVED  
SAFETY AND SECURITY



SAFETY ENHANCED with  
more solid built quality  
on SFC Cabin



Serrated Coupling flange  
propeller shaft for better  
Reliability, Maintenance



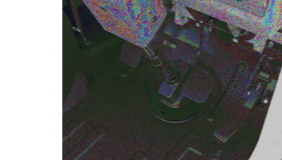
Power steering with reduced  
effort & new steering wheel



Light Weight Loadbody  
with increased strength



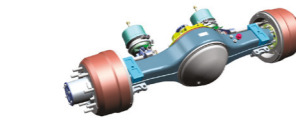
High Quality Music System  
with Blaupunkt Speakers &  
High Speed USB Mobile Charger



Improved Ergonomic pedal  
positions to reduce fatigue



Lower NVH with improved engine mount  
and Parabolic suspension with rubber Bush



Banjo Type Rear Axle  
More Load carrying capacity,  
lesser prone to leakage



Long member thickness  
is increased to 5mm



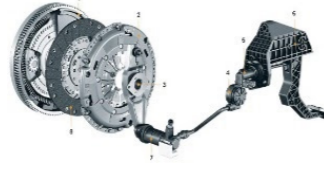
Gradeability  
Improvement (~40%+)



Lower Gear Shift Effort  
with optimized  
Gear Shift travel



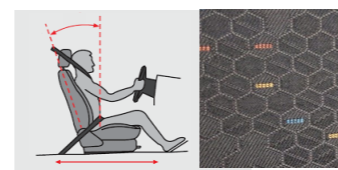
H2LS Brakes for better  
Efficiency



Reduced clutch effort  
by 40%



New Multi-Function  
Ergonomic Instrument Cluster  
With Gear Shift Advisor



Seat adjustment in  
XZ Direction & Improved heat  
resistant melba fabric seats

The 34 year long legacy of India's favorite 407 is set to continue and achieve greater heights as the 407 Pickup is back in an all new and Improved avatar! Today, the TATA 407 GOLD is not just another Pickup, but an emotion and an answered prayer to Thousands of Proud Owners, seeking profitable solutions to grow their business. Rightly named as "The Non Stop Profit Machine", this vehicle now offers its owners the 6 six powers of profits, performance, Driving Comfort, Convenience & Connectivity, Value as well as Safety & Security, thus providing owners a powerful tool to grow their business to its fullest potential. Tata Motors is the ONLY manufacturer in India selling the SFC Styled Cabins with the 'Unique NOSE' for highest levels of safety.



Upgraded BS6 Features  
that Leads to

➤ Highest Reliability

➤ Best Drivability

➤ Non Stop Profits

## UTILITIES THAT MAKE 407 GOLD THE BEST CHOICE



Service Interval of 40 000 km;  
Warranty 3-year or 3 lakh km\*



Extra Low:  
Lowest Loading Platform



Rule the Road:  
Shortest Turning Circle Radius



Less is More:  
India's Shortest Pickup

The DNA of BS4 Engine is carried to the 4SP CR BS6 Engine so that the same reliability & Mileage Superiority is achieved



Improved Drivability because of improved Low end torque and Flat Torque Range-Better Mileage

Extra Large:  
Largest Loading Area



Extra Muscle:  
India's highest payload pick up : 2 T



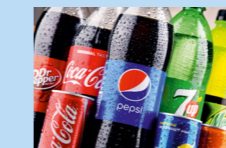
## ALL-SEASON MANY APPLICATIONS



Fruits & Vegetables



Gas Cylinders



Cold Drinks



Milk Cans



FMCG



Tent House



Dairy Products



E-commerce

\*Images used are representative purposes only  
\*\*Technical specs are subjected to be changed & are applicable under standard test conditions

\*Images used are representative purposes only  
\*\*Technical specs are subjected to be changed & are applicable under standard test conditions