

TECHNICAL SPECIFICATIONS 610 SFC TT 3305 WB, 6.25 Ton

POWERTRAIN

Engine Type	4SPCR BS6
Displacement/ Cubic capacity	2956cc
Maximum Power Output (in kW)	73.5 kW (100PS) @2800 r/min
Maximum Torque (in Nm)	300 Nm @ 1200 -2200 r/min
Clutch	Single plate dry friction type- 280 mm dia
Transmission	G550, 5 Speed, Manual Synchromesh Gearbox (5F, 1R), PTO

FUEL SYSTEM

Fuel Injection system	M/s Delphi (suitable upto 2000 bar)
Fuel tank capacity (in litres)	60 Liter

ELECTRICALS

Battery	12V, 75 ah capacity
Alternator	120 amps

PERFORMANCE

Max. Gradeability (1st Gear)	40.00%
------------------------------	--------

STEERING

Steering System	Power Steering
-----------------	----------------

FRAME

Frame	Ladder type frame with riveted/bolted cross members (7 no)
Long Member Dimensions	200 x 60 x 5

BRAKES

Service Brake	Vaccum assisted; Hydraulic two leading slide shoe; Auto Slack Adjuster
Parking Brake	Transmission mounted parking drum brake

SUSPENSION & TYRES

Front Suspension	Parabolic spring with rubber bush, 2 no Hydraulic Double acting Shock Absorbers
Rear Suspension	Semi elliptical leaf springs
No of tyres	Front 2,Rear 4 , Spare 1
Front	7.50-16 16PR
Rear	7.50-16 16PR

WEIGHT

Front Axle Weight -FAW (in kg)	1510
Rear Axle Weight -RAW (in kg)	1015
Kerb Weight (in kg)	2525
Gross vehicle weight (in kg)	6250

OVERALL DIMENSIONS

Wheel base (in mm)	3305
Overall Length (in mm)	5330
Overall Height (in mm)	2300
Overall Width (in mm)	2075

LOAD BODY DIMENSIONS

Load body Length (in mm)	NA	3070	3070
Load body Width (in mm)	NA	2000	1965
Load body Height (in mm)	NA	450	1835
Minimum Turning Dia (in metres)	14	14	14
Minimum Ground Clearance (in mm)	214	214	214
Seating Capacity	Driver +2	Driver +2	Driver +2
Warranty	3 years or 300000 km, Whichever is earlier*		

MAINTENANCE SCHEDULES

Service Item	Service Interval (km)	Interval (km)
Engine oil		40,000
T/M oil		120,000
Differential oil		120,000
Power steering oil		120,000
Coolant		240,000
Clutch oil		120,000
Hub grease Front		120,000
Hub grease Rear		120,000

Specifications are subject to change without prior notice. These are indicative photos, specifications for reference only.

Dealer Stamp



For more information, please visit our website: www.light-trucks.tatamotors.com
 You can also contact our Sales Office: Tata Motors Limited, 4th Floor, Ahura Centre, 82, Mahakali Caves Road, MIDC, Andheri (East), Mumbai - 400 093 or call toll-free no. 1800 209 7979.

Terms & Conditions apply as per the policy of ITGI. Insurance available on light, intermediate & heavy commercial vehicles.
 CAUTION: Accessories shown in the picture or elsewhere do not constitute standard fitment. The specifications are merely indicative. Due to continuous product improvements, these specifications are liable to change without notice.

TATA MOTORS

3-YEAR/3-LAKH KM WARRANTY

SAMPOORNA SEVA

TATA NEW GENERATION TELEMATICS

TATA DELIGHT

TATA ZIPPY

TATA OK

TATA GENUINE PARTS

TATA SURAKSHA

TATA PROLIFE

TATA KAVACH

TATA ALERT

AAPKE SAATH HAR KADAM

TOLL-FREE 1800 209 7979

TATA MOTORS
Connecting Aspirations



STABLE PERFORMANCE ON UNSTABLE ROADS

610 SFC Twin Tyre



SFC 407 HT Range is now 610 SFC TT REFRESH in BS6



H2LS BRAKES

DRIVER'S SAFETY

POWER STEERING

FUEL-EFFICIENT ENGINE

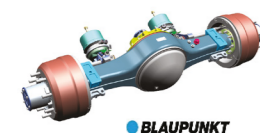
3-YEAR/3 LAKH KM* WARRANTY

IN-BUILT MUSIC SYSTEM

MOBILE CHARGING SOCKET

HEAT-RESISTANT FEATURES

IMPROVED PRODUCT PACKAGE



Banjo Type Rear Axle
More Load carrying capacity, lesser prone to leakage



Long member thickness is increased to 5mm



Light Weight Loadbody with increased strength



Sealed Wiring Harness connectors



Transmission / Steering oil change / Hub Greasing interval is improved from 80k kms to 120000 kms



SAFETY ENHANCED with more solid built quality on SFC Cabin



New 120 A alternator



Serrated Coupling flange propeller shaft for better Reliability, Maintenance & to increase Power Transmission



Music system & Blaupunkt speakers + USB fast charging

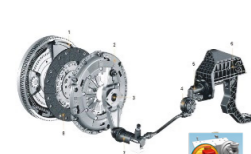


New Instrument Cluster with Tell tale Symbols and Gear shift advisor

IMPROVED DRIVERS' PACKAGE



H2LS Brakes with Brake Boosters



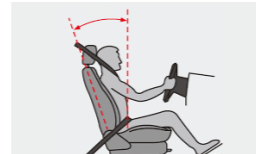
Reduced clutch effort by 40%



Lower Gear Shift Effort with optimized Gear Shift travel



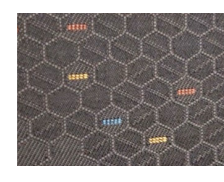
Power steering with reduced effort and new steering wheel



Seat adjustment in XZ Direction



ABC Pedals Improved Ergonomic pedal positions to reduce fatigue



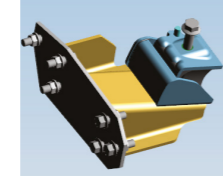
Melba Fabric for Seats for better comfort both in summer and winter



Improved New Combination switch with better reliability



Lower NVH with improved engine mount and Parabolic suspension with rubber Bush



EXPERIENCE THE POWER OF 6

BS6 THE POWER OF 6



POWER OF GREATER PROFITS



POWER OF ENHANCED PERFORMANCE



POWER OF INCREASED DRIVING COMFORT



POWER OF GREATER CONVENIENCE & CONNECTIVITY



POWER OF GREATER VALUE



POWER OF IMPROVED SAFETY AND SECURITY

The All New 610 SFC Twin Tyre:

The trucking industry can be tough sometimes with unpredictable circumstances and unknown Terrain. But when the Terrain gets Tough, our Trucks get Tougher. We thus bring to you the TATA 610 SFC TT, "The Stable performance on Unstable Roads"

The 610 SFC TT has evolved from the SFC 407 HT, not only to comply with the BS6 norms but also to provide maximum benefits to its Owners. The vehicle offers its owners the 6 six powers of profits, performance, Driving Comfort, Convenience & Connectivity, Value as well as Safety & Security, thus providing owners a powerful tool to grow their business to its fullest potential.

In addition, Tata Motors is the ONLY manufacturer in India selling the SFC Styled Cabins with the 'Unique NOSE' for highest levels of safety.



INDIA'S CONSTRUCTION SPECIALIST



The DNA of BS4 Engine is carried to the BS6 Engine so that the same reliability and Mileage Superiority is achieved

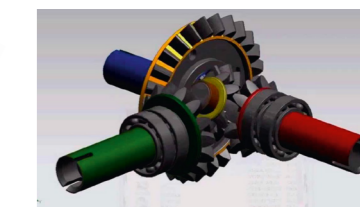
GRADEABILITY & RAR IMPROVEMENTS

In BS6



40+

New Gradeability



Improved New Rear Axle Ratio

HIGHER POWER & TORQUE



Max Power improvement to 73.5 KW (100 PS) - 18% more

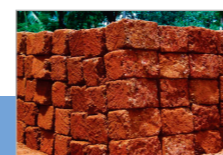


Max Torque improvement to 300 Nm (20% more)
Low End torque Increased to 290 Nm (26 % increase)
Flat Torque for lesser Gear shifting & better fuel efficiency



Strongest G550 gearbox for heavy-duty application

INDIA'S CONSTRUCTION SPECIALIST



Laterite



Sand



Bricks



Heavy Duty



Gravels



Cement

*Images used are representative purpose only
**Technical specs are subjected to be changed & are applicable under standard test conditions

*Images used are representative purpose only
**Technical specs are subjected to be changed & are applicable under standard test conditions