

TECHNICAL SPECIFICATIONS 610 SK 3305 WB, 6.25 Ton

POWERTRAIN

Engine Type	4SPCR BS6
Displacement/ Cubic capacity	2956cc
Maximum Power Output (in kW)	73.5 kW (100PS) @2800 r/min
Maximum Torque (in Nm)	300 Nm @ 1200 -2200 r/min
Clutch	Single plate dry friction type- 280 mm dia
Transmission	G550, 5 Speed, Manual Synchronesh Gearbox (5F, 1R), PTO

FUEL SYSTEM

Fuel Injection system	M/s Delphi (suitable upto 2000 bar)
Fuel tank capacity (in litres)	60 Liter

ELECTRICALS

Battery	12V, 75 ah capacity
Alternator	120 amps

PERFORMANCE

Max. Gradeability (1st Gear)	40%+
------------------------------	------

STEERING

Steering System	Power Steering
-----------------	----------------

FRAME

Frame	Ladder type frame with riveted/bolted cross members (7 no)
-------	--

Long Member Dimensions

200 x 60 x 5

BRAKES

Service Brake	Vacuum assisted, H2LS Brakes with Auto Slack Adjuster
Parking Brake	Transmission mounted parking drum brake

SUSPENSION & TYRES

Front Suspension	Semi elliptical multi leaf spring, 2 no Hydraulic double acting telescopic shock absorbers
------------------	--

Rear Suspension

Semi elliptical multi leaf springs

No of tyres

Front 7.50 -16 16PR

Rear 7.50 -16 16PR

WEIGHT

Front Axle Weight -FAW (in kg)	1520
Rear Axle Weight -RAW (in kg)	1015
Kerb Weight (in kg)	2535
Gross vehicle weight (in kg)	6250

OVERALL DIMENSIONS

Wheel base (in mm)	3305	3305
Overall Length (in mm)	5330	5340
Overall Height (in mm)	2300	2300
Overall Width (in mm)	2075	2100

LOAD BODY DIMENSIONS

Load body Length (in mm)	NA	3120
Load body Width (in mm)	NA	1860
Load body Height (in mm)	NA	525
Minimum Turning Dia (in metres)	14	14
Minimum Ground Clearance (in mm)	213	213
Seating Capacity	Driver +2	Driver +2
Warranty	3 years or 300000 km, Whichever is earlier*	



CAB



Tipper

Specifications are subject to change without prior notice. These are indicative photos, specifications for reference only.



Dealer Stamp

For more information, please visit our website: www.light-trucks.tatamotors.com
 You can also contact our Sales Office: Tata Motors Limited, 4th Floor, Ahura Centre, 82, Mahakali Caves Road, MIDC, Andheri (East), Mumbai - 400 093 or call toll-free no. 1800 209 7979.

Terms & Conditions apply as per the policy of ITGI. Insurance available on light, intermediate & heavy commercial vehicles.
 CAUTION: Accessories shown in the picture or elsewhere do not constitute standard fitment. The specifications are merely indicative. Due to continuous product improvements, these specifications are liable to change without notice.

TATA MOTORS SAMPOORNA SEVA

3-YEAR/3-LAKH KM WARRANTY

TATA NEW GENERATION TELEMATICS

TATA DELIGHT

TATA ZIPPY

TATA OK

TATA GENUINE PARTS

TATA SURAKSHA

TATA PROLIFE

TATA KAVACH

TATA ALERT

AAPKE SAATH HAR KADAM

TOLL-FREE 1800 209 7979

TATA MOTORS
Connecting Aspirations



POWERFUL PERFORMANCE IN EXTREME CONDITIONS

610 SK Strong, Capable, Efficient



Tata SK 407 BS4 Tipper is now upgraded to Tata 610 SK **BS6**

THE BOSS OF OFF ROADING IS NOW EVEN MORE POWERFUL IN BS6



TIPPING ANGLE OF 51%

DRIVER'S SAFETY

HIGHER LOAD CARRYING CAPACITY

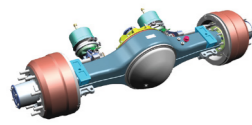
POWERFUL ENGINE

BEST-IN-CLASS GRADEABILITY (>40%)

3-YEAR/3 LAKH KM WARRANTY

3 DECADES OF RELIABILITY & TRUST

IMPROVED PRODUCT PACKAGE



Banjo Type Rear Axle
More Load carrying capacity,
lesser prone to leakage



Long member thickness is
increased to 5mm



Heavy duty Ready built
Tipping body



Sealed Wiring
Harness connectors



Transmission / Steering oil change /
Hub Greasing interval is improved
from 80k kms to 120000 kms



SAFETY ENHANCED with more
solid built quality on SFC Cabin



New 120 A alternator



Serrated Coupling flange propeller shaft
for better Reliability, Maintenance & to
increase Power Transmission



Music system & Blaupunkt speakers
+ USB fast charging

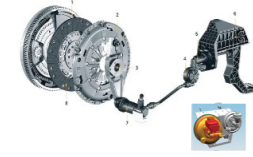


New Instrument Cluster
with Tell tale Symbols
and Gear shift advisor

IMPROVED DRIVERS' PACKAGE



H2LS Brakes with
Brake Boosters



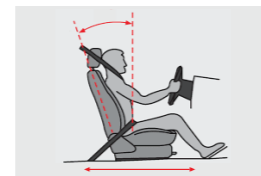
Reduced clutch effort
by 40%



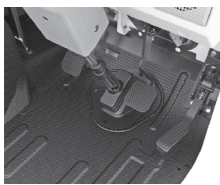
Lower Gear Shift Effort with
optimized Gear Shift travel



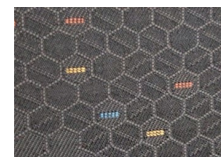
Power steering with reduced effort
and new steering wheel



Seat adjustment in XZ Direction



ABC Pedals
Improved Ergonomic pedal
positions to reduce fatigue



Melba Fabric for Seats for
better comfort both in
summer and winter



Improved New Combination
switch with better reliability



Lower NVH with improved engine mount and
increased thickness of Leaf springs with Hydraulic
Double acting Shock Absorbers



Electric switch for tipping

EXPERIENCE THE TATA MOTORS ILCV 6 INTERMEDIATE & LIGHT COMMERCIAL VEHICLE POWER OF 6 EXPERIENCE THE POWER OF CHANGE

BS6 THE POWER OF 6



1 POWER OF
GREATER PROFITS



2 POWER OF ENHANCED
PERFORMANCE



3 POWER OF INCREASED
DRIVING COMFORT



4 POWER OF GREATER
CONVENIENCE &
CONNECTIVITY



5 POWER OF
GREATER VALUE



6 POWER OF IMPROVED
SAFETY AND SECURITY

India's most loved LCV TIPPER is now even more
capable and reliable to deliver more profits!



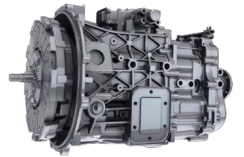
HIGHER POWER & TORQUE



Max Power improvement
to 73.5 KW (100 PS)
- 18% more



Max Torque improvement to 300 Nm (20% more)
Low End torque Increased to 290 Nm (26% increase)
Flat Torque for lesser Gear shifting & better fuel efficiency



Strongest G550 gearbox
for heavy-duty application

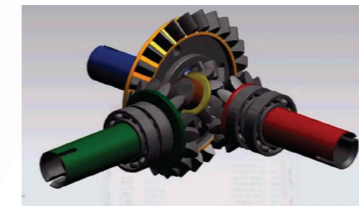
GRADEABILITY AND RAR IMPROVEMENTS

In BS6



40+

New Gradeability



Improved New
Rear Axle Ratio



The DNA of BS4 Engine is
carried to the BS6 Engine so that
the same reliability and
Mileage Superiority is achieved

ALL-SEASON MANY APPLICATIONS



Laterite



Sand



Bricks



Heavy Duty



Gravels



Cement

*Images used are representative purpose only
**Technical specs are subjected to be changed & are applicable under standard test conditions

*Images used are representative purpose only
**Technical specs are subjected to be changed & are applicable under standard test conditions